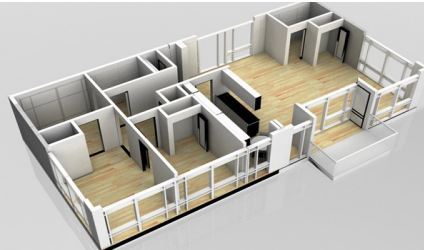




Modular Penthouse Condominium  
Chicago

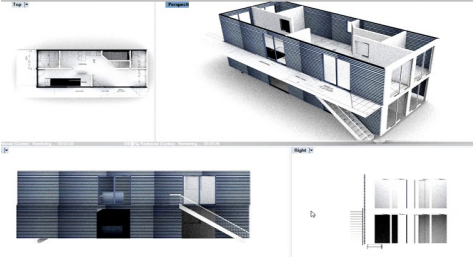


Prototype Senior Lowrise / Midrise  
1250 gsf factory built\_3 BR



Lowrise Senior Courtyard Residential  
Gated community. Dedicated garages

**Volumetric Lowrise Corner Steel Prefab Residential Design System\_Detached + MultiFamily**  
All Images (c) 2024 Stephen Synakowski Architects



2 Story 1 or 2 du 900 gsf/du 18 x 50  
Detached, stacked, min. zoning width



Typical corner support CRS module  
(c) SBC Steel Building Construction



Modular Penthouse Condominium  
Chicago. Roof gardens, deck



Stacked Prototype\_Courtyard\_ 1250 gsf  
3-5 stories\_ Balconies, Corner Cores



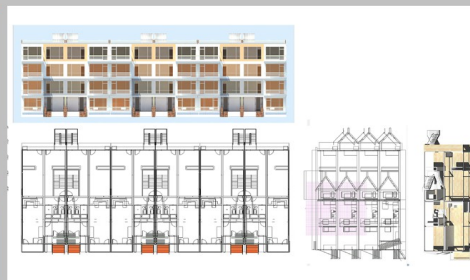
Multifamily/Educational/Hospitality  
Courtyard view design left



Volumetric Custom Modern House  
Superimposed factory built frames



Attached Stacked Prototype\_1250 gsf  
Conventional Footprint\_Urban Infill



Attached \_Transverse Fenestration  
3 BR Cross Vent Conventional Plan



Base Unit\_Attached\_1 Interior Stair  
2 to 4 walkup flats

**Engineered Design Systems | Lowrise Steel Volumetric**

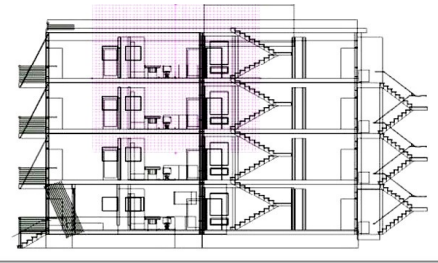




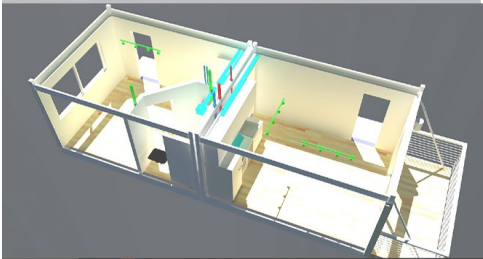
Attached Stacked Prototype\_4 DU  
2 to 4 Units\_Urban Infill



View thru Unit shown left  
Cross Ventilation\_1250 gsf / DU



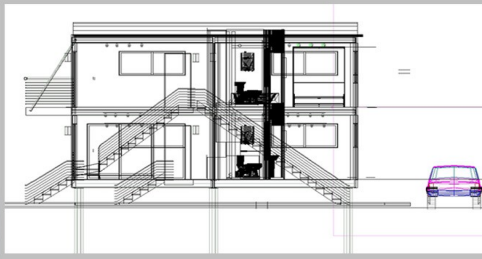
Attached Stacked Prototype\_Section  
Interior Stair\_2 / 3 BR\_Ext. Back Stair



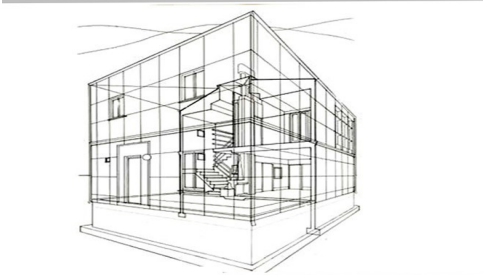
Micro Housing\_600 gsf DU  
To 3 flrs\_Affordable



Micro Housing\_Duplex 2 BR  
w/ Kitchen, Bath, Closet Pods



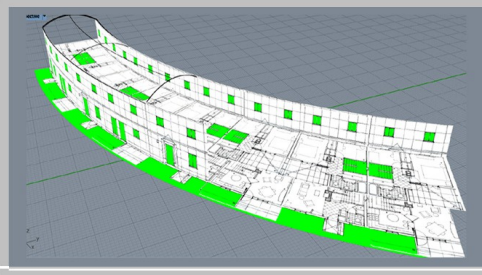
MicroHousing \_ Stacked Affordable  
Factory Built\_Micropiles



Energy Efficient Panel Houe \_ 1250 gsf  
Attachable\_25' Conventional Lot width



Panel House\_3 bed\_SIPs  
Minimum Standard Urban Lot

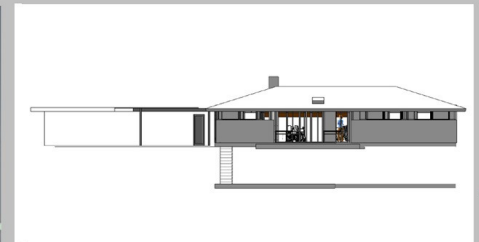


Energy Panel House \_Attached, Variant  
Std Plan, Adjusted as Needed

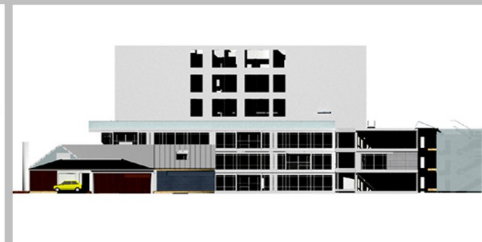
*Volumetric Lowrise Prefab Corner Steel Design System\_Detached + MultiFamily*  
*All Images (c) 2024 Stephen Synakowski Architects*



MicroHousing Twinned\_Special Needs  
Shared Atrium\_Common Roof



Senior Single Family Ranch\_1250 gsf  
Usonian Home\_Basement, Garage



Single Family to 5 stories\_Volumetric  
All Low Volumetric\_Comparative Sizes

## Engineered Design Systems | Lowrise Steel Volumetric

